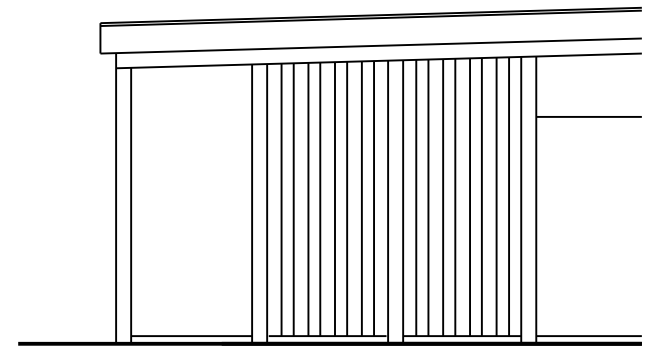
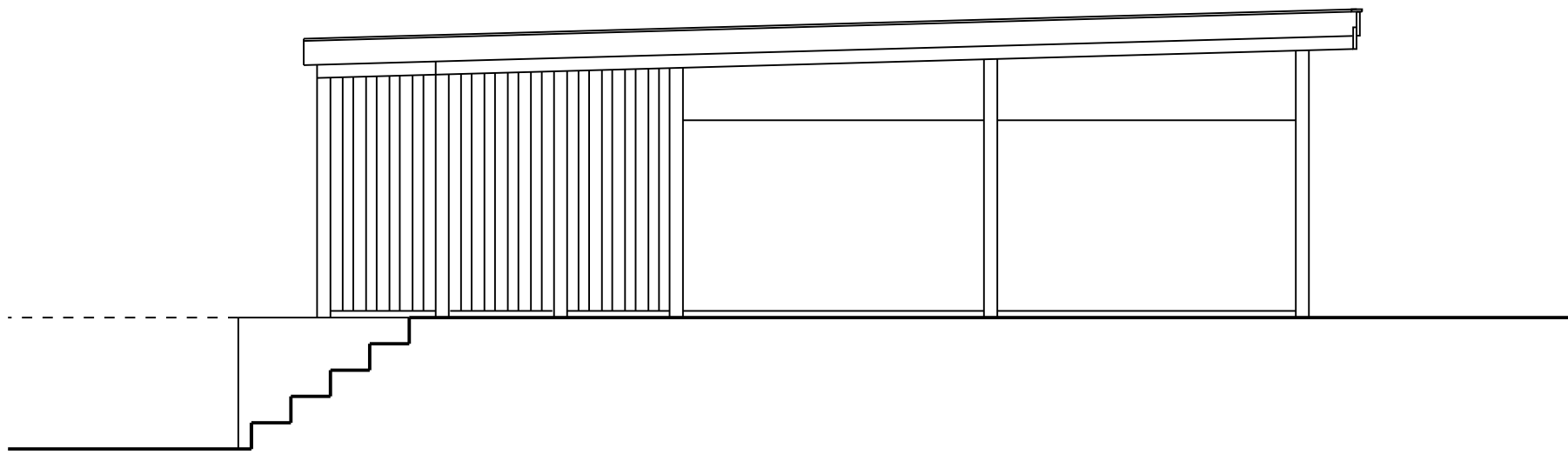


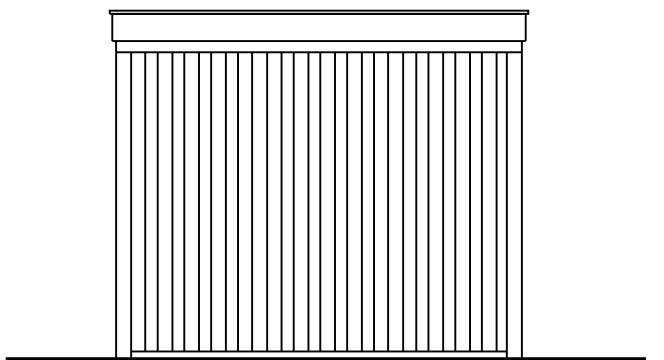
SNIT



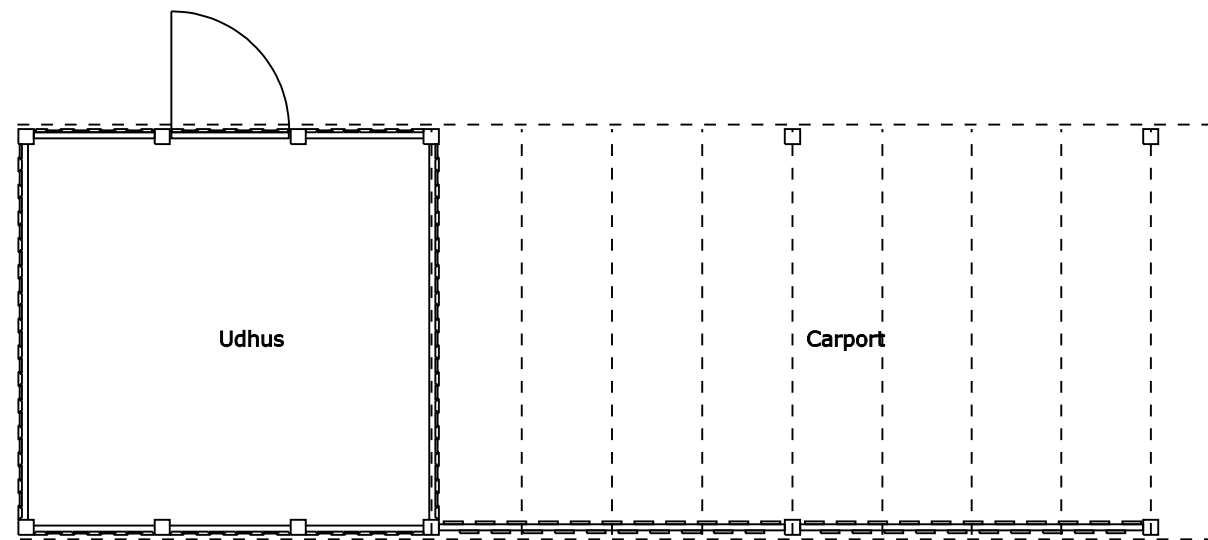
OPSTALT, HALVTAGSLØSNING



OPSTALT, LUKKET LØSNING

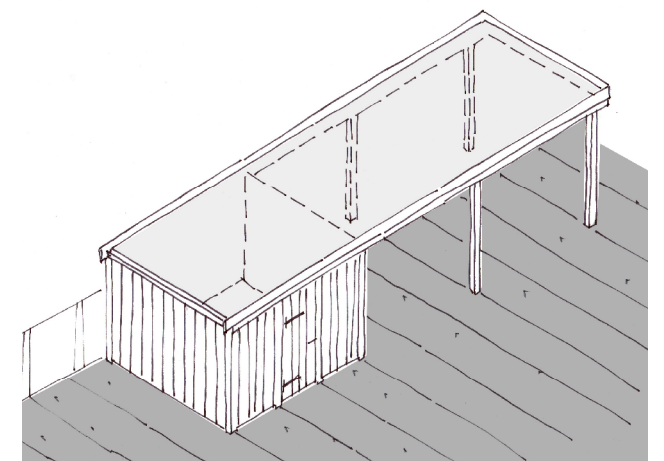


OPSTALT; GAVL



PLAN

udvidelse, 90 cm



MYNDIGHEDSPROJEKT

Terrasserne, Himmelev, 4000 Roskilde
 Udhus, udvidet 90 cm i længden Mål: 1:50 Dato: 24.03.2005
 Arkitekt maa Martin Løkkegaard, Wiedeweltsgade 11, 2100 København Ø.